



NTSC U/C

PlayStation™

# AIR COMBAT™



KIDS TO ADULTS



CONTENT RATED BY  
ESRB

SLUS-00001

**namco®**



## **WARNING: READ BEFORE USING YOUR PlayStation™ GAME CONSOLE.**

A very small percentage of individuals may experience epileptic seizures when exposed to certain light patterns or flashing lights. Exposure to certain patterns or backgrounds on a television screen or while playing video games, including games played on the PlayStation game console, may induce an epileptic seizure in these individuals. Certain conditions may induce previously undetected epileptic symptoms even in persons who have no history of prior seizures or epilepsy. If you, or anyone in your family, has an epileptic condition, consult your physician prior to playing. If you experience any of the following symptoms while playing a video game – dizziness, altered vision, eye or muscle twitches, loss of awareness, disorientation, any involuntary movement, or convulsions – IMMEDIATELY discontinue use and consult your physician before resuming play.

## **WARNING TO OWNERS OF PROJECTION TELEVISIONS:**

Do not connect your PlayStation game console to a projection TV without first consulting the user manual for your projection TV, unless it is of the LCD type. Otherwise, it may permanently damage your TV screen.

## **HANDLING YOUR PlayStation™ DISC:**

- This compact disc is intended for use only with the PlayStation™ game console.
- Do not bend it, crush it or submerge it in liquids
- Do not leave it in direct sunlight or near a radiator or other source of heat.
- Be sure to take an occasional rest break during extended play.
- Keep this compact disc clean. Always hold the disc by the edges and keep it in its protective case when not in use. Clean the disc with a lint-free, soft, dry cloth, wiping in straight lines from center to outer edge. Never use solvents or abrasive cleaners.





## TABLE OF CONTENTS

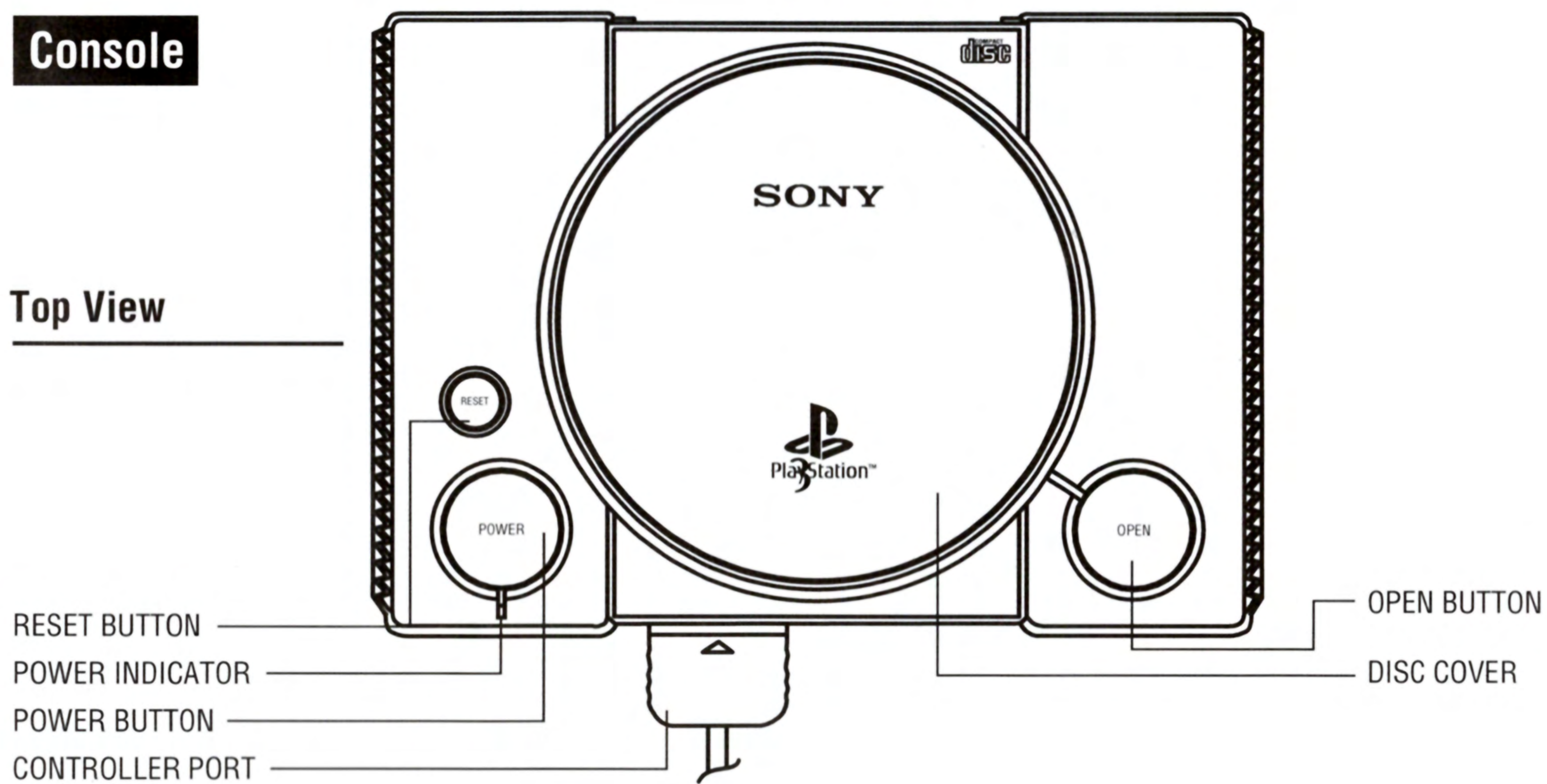
Set Up Info	2
Story	4
How to Start a Game	4
Options	4
1p Game	5
2p Mode	10
How to Play	10
How to Avoid an Enemy Attack	11
Saving and Loading	11
Players: 1 or 2	
Memory Card: 1 block	



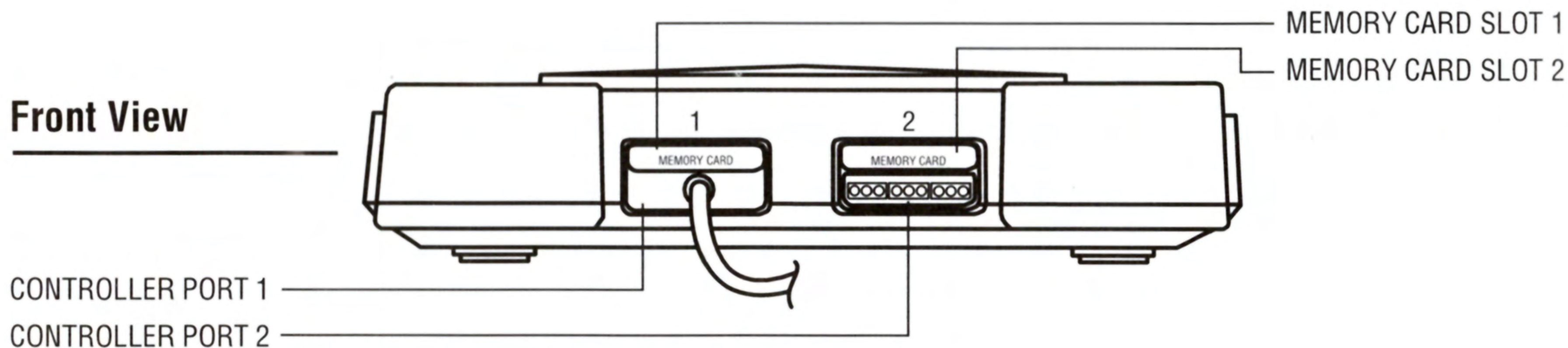
Set up your PlayStation™ game console according to the instructions in its Instruction Manual. Make sure the power is off before inserting or removing a compact disc. Insert the Air Combat disc and close the CD door. Insert game controllers and turn on the PlayStation™ game console. Follow on-screen instructions to start a game.

## Console

### Top View



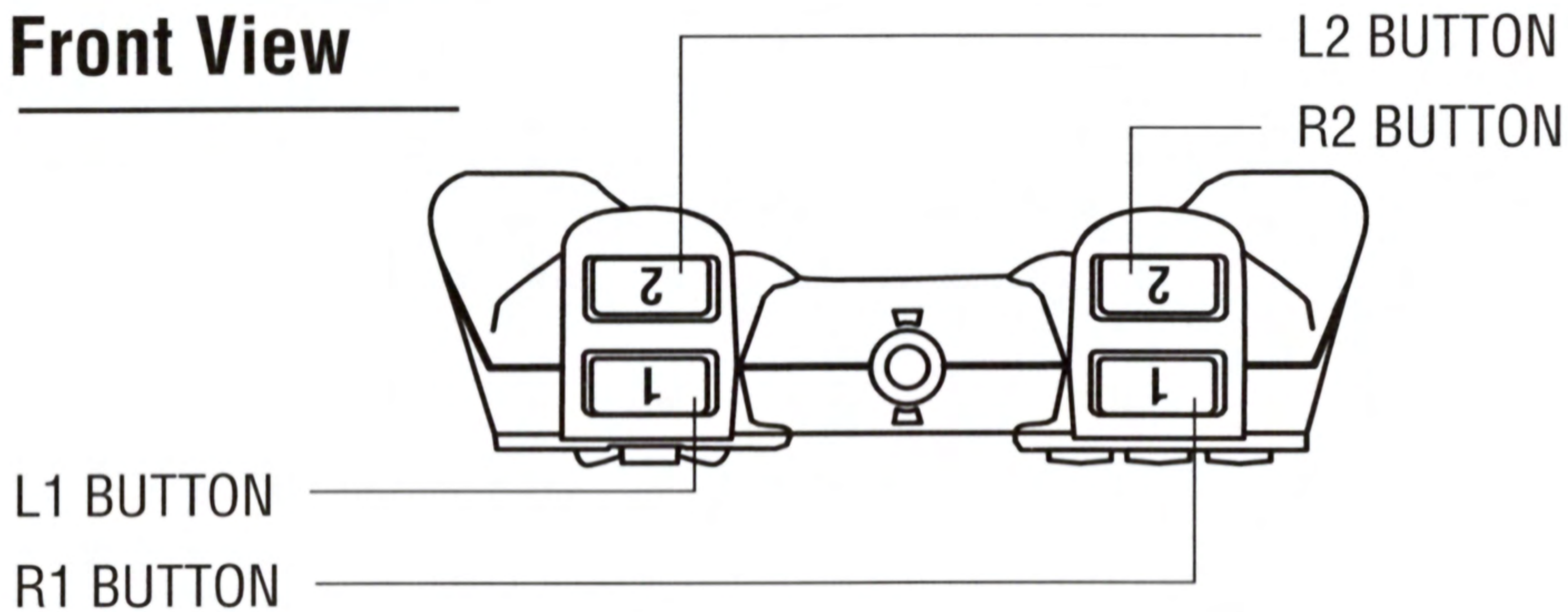
### Front View



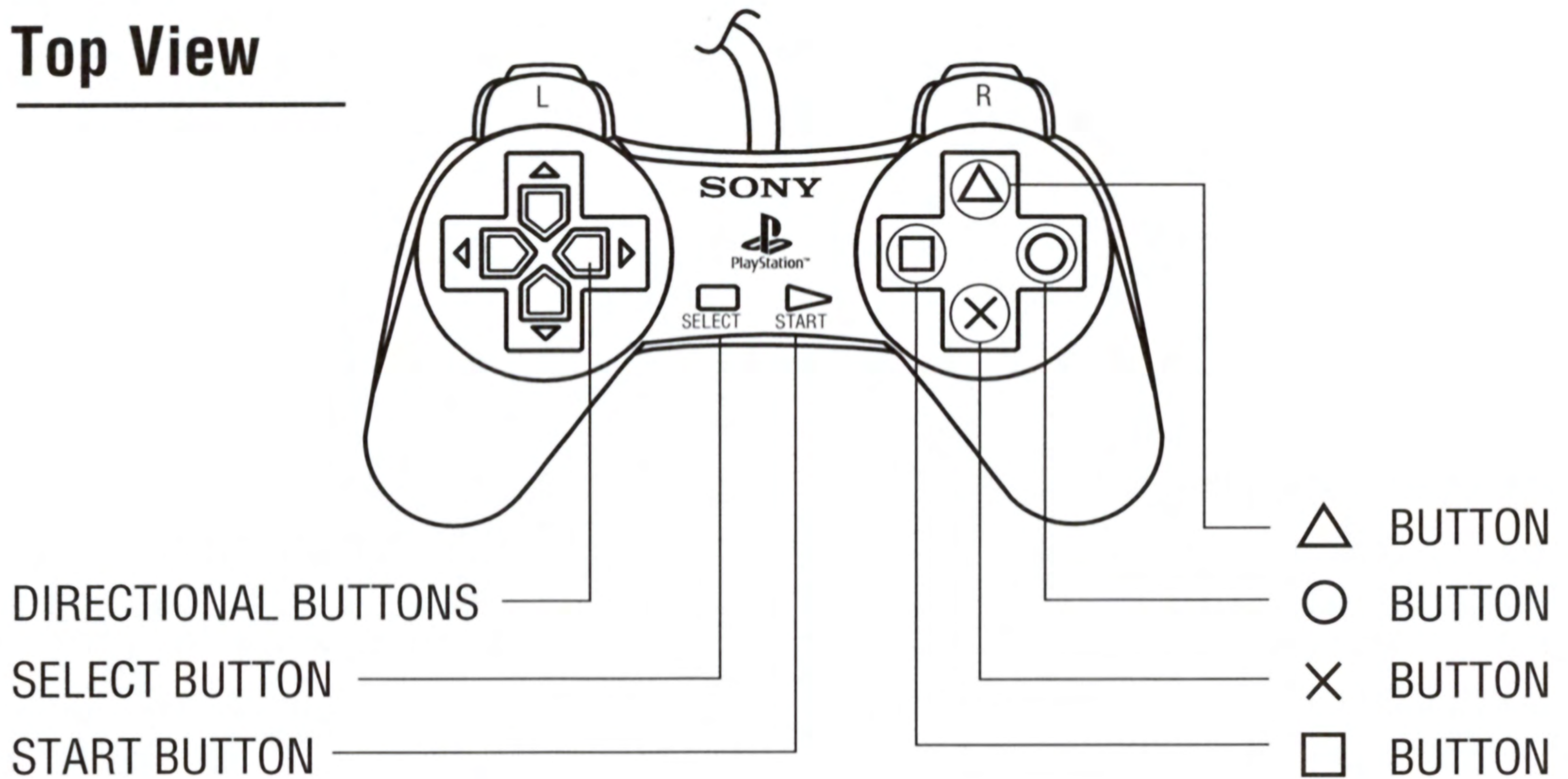


# Controller

## Front View



## Top View





## STORY

Six months ago, a new breed of terrorist invaded several countries. The casualties were staggering. The governments of the world band together to eradicate this global threat. A band of elite mercenaries are hired to strike where the air forces have failed. The reward for these impossible surgical strikes is awesome... You are the team leader, equip your team with the most devastating air power available from lightning fast F-15 s to undetectable F-22 Stealth fighters! Air superiority is the top priority in defeating this invasion force. Once your team dominates the air, the enemy's ground forces will be useless!

## HOW TO START A GAME

Insert the disc in the PlayStation game console. The title will appear on the screen. Three options are listed in the menu on the Title Screen: 1P GAME, 2P VS MODE, and OPTION. Select the desired mode by moving the cursor up or down with the Directional Key. Use the Start Button or [ ○ ] to make your choice.

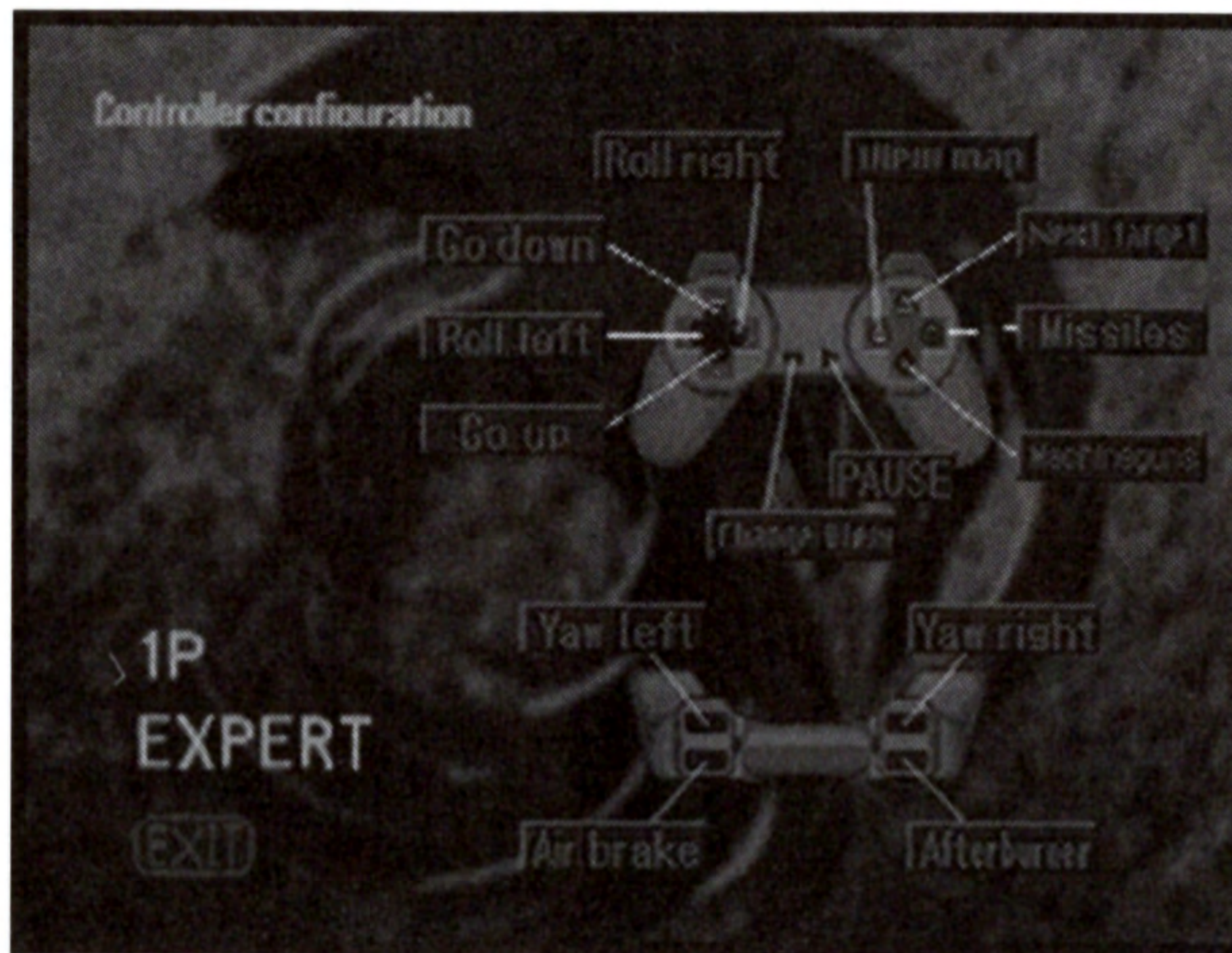
**1P Game:** This is the strategic campaign. Follow the scenario and complete the maneuvers.

**2P VS Mode:** A head-to-head dogfight.

## OPTIONS

**1. Selecting Novice or Expert:** Novice (beginner) or expert (advanced) operation can be selected using the right or left directional key, and pressing the [ ○ ] button.





**2. Setting Button Locations:** After choosing between Novice and Expert you can change the location of buttons. Shift right or left with the Directional Key and choose which button you would like to change. Settings can be changed up or down with the directional keys.

**3. Sound Settings:** You can listen to the game music when viewing this screen. Also, you can choose between stereo and mono for voice output.

**4. Save & Load:** You can save and load completed missions if you have a memory card.

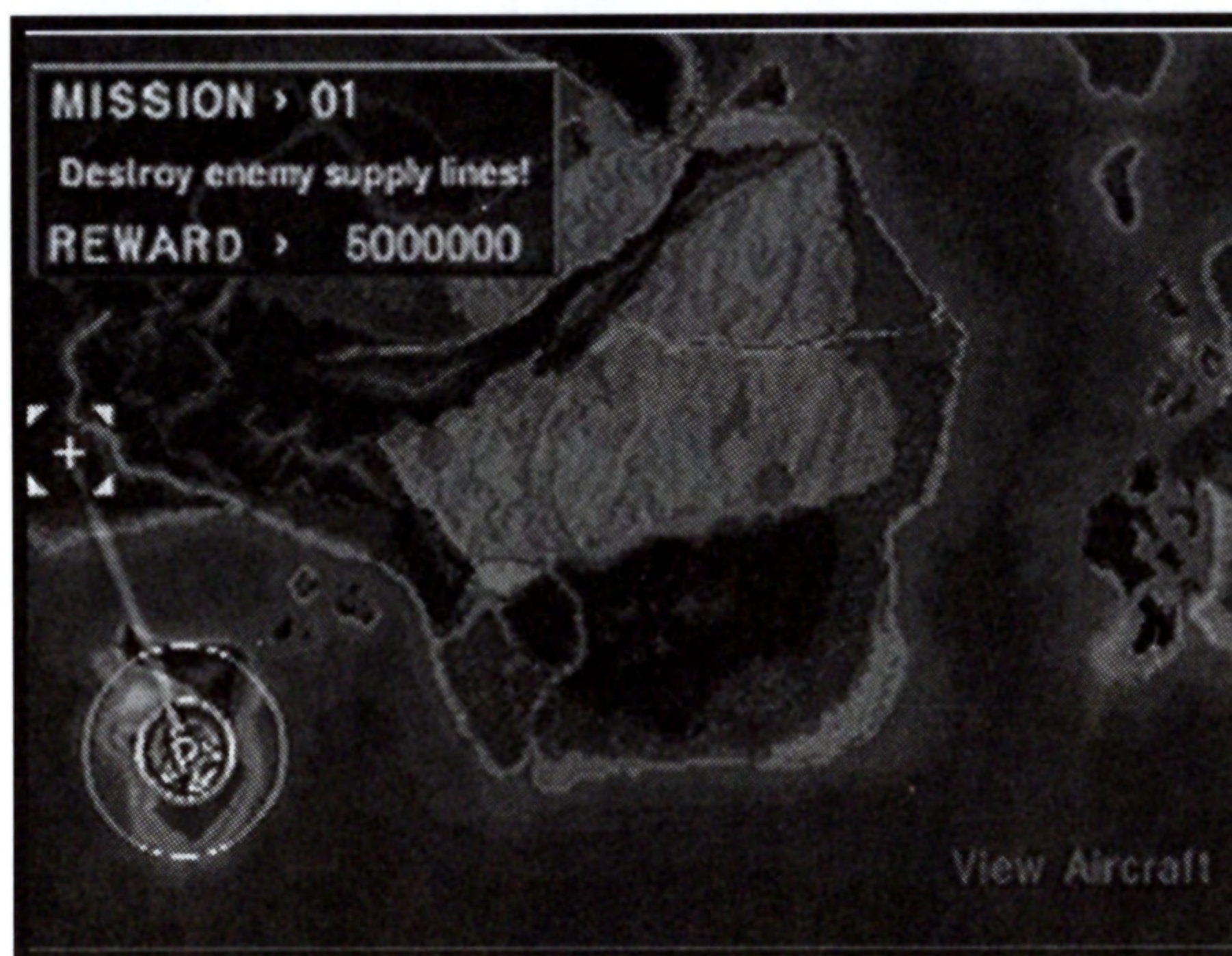
## 1P GAME

Your role is that of mercenary squadron leader, and you are responsible for the annihilation of the terrorists. You will be given a mission briefing that will include complete destruction of the enemy and destruction of enemy bases. Your ultimate target is the main enemy base.



## 1. Choose Difficulty Level, Maps and Mission

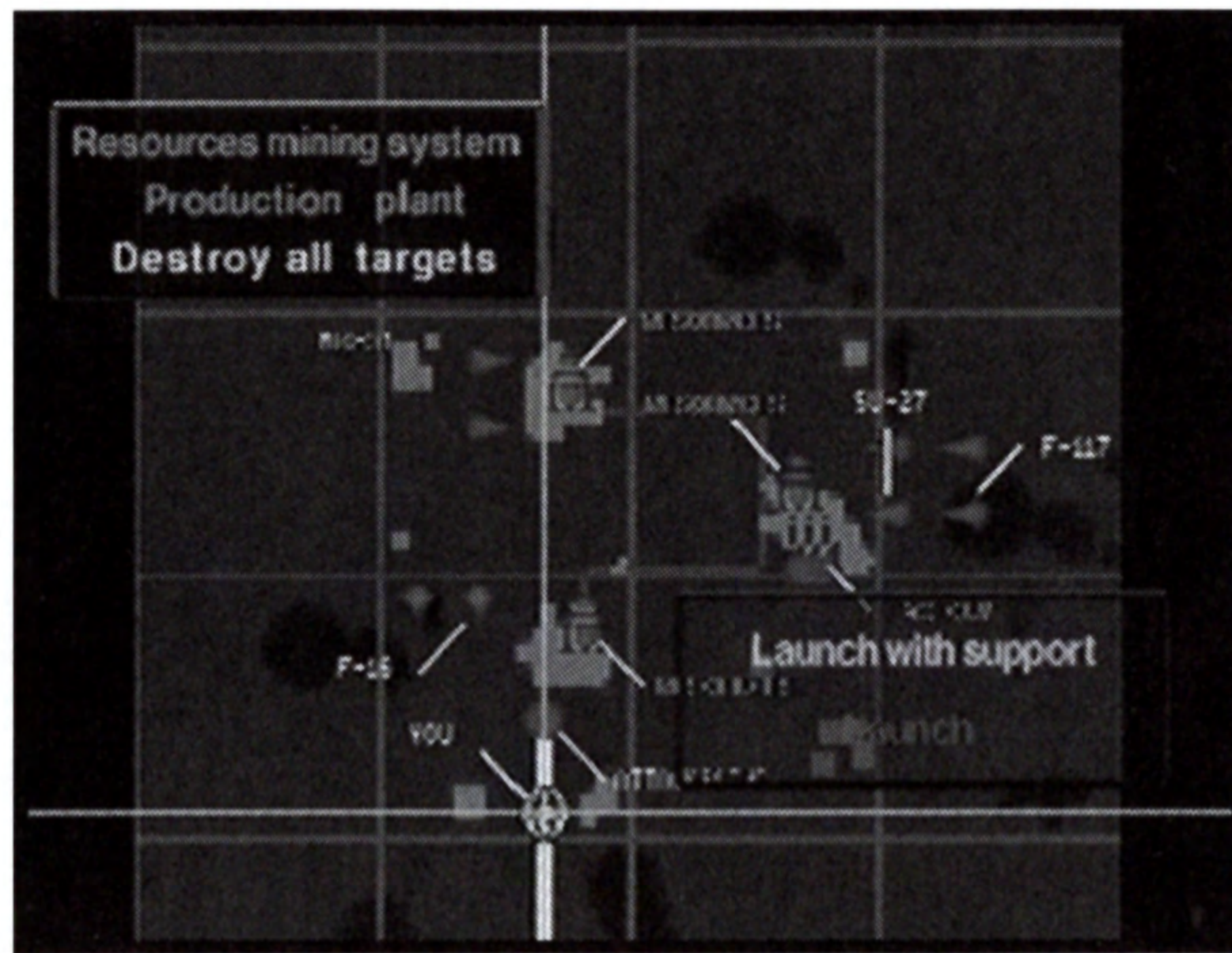
After choosing the 1P game you may now choose level of difficulty. After making your choice, a map will appear on the screen. At the bottom left of the screen is an outlined area which includes your home base. You hold supremacy in this area, and may carry out attacks in various points adjacent to it. Make choices by shifting the Directional Key to the left or right, and pushing the [ ○ ] Button.



## 2. Briefing

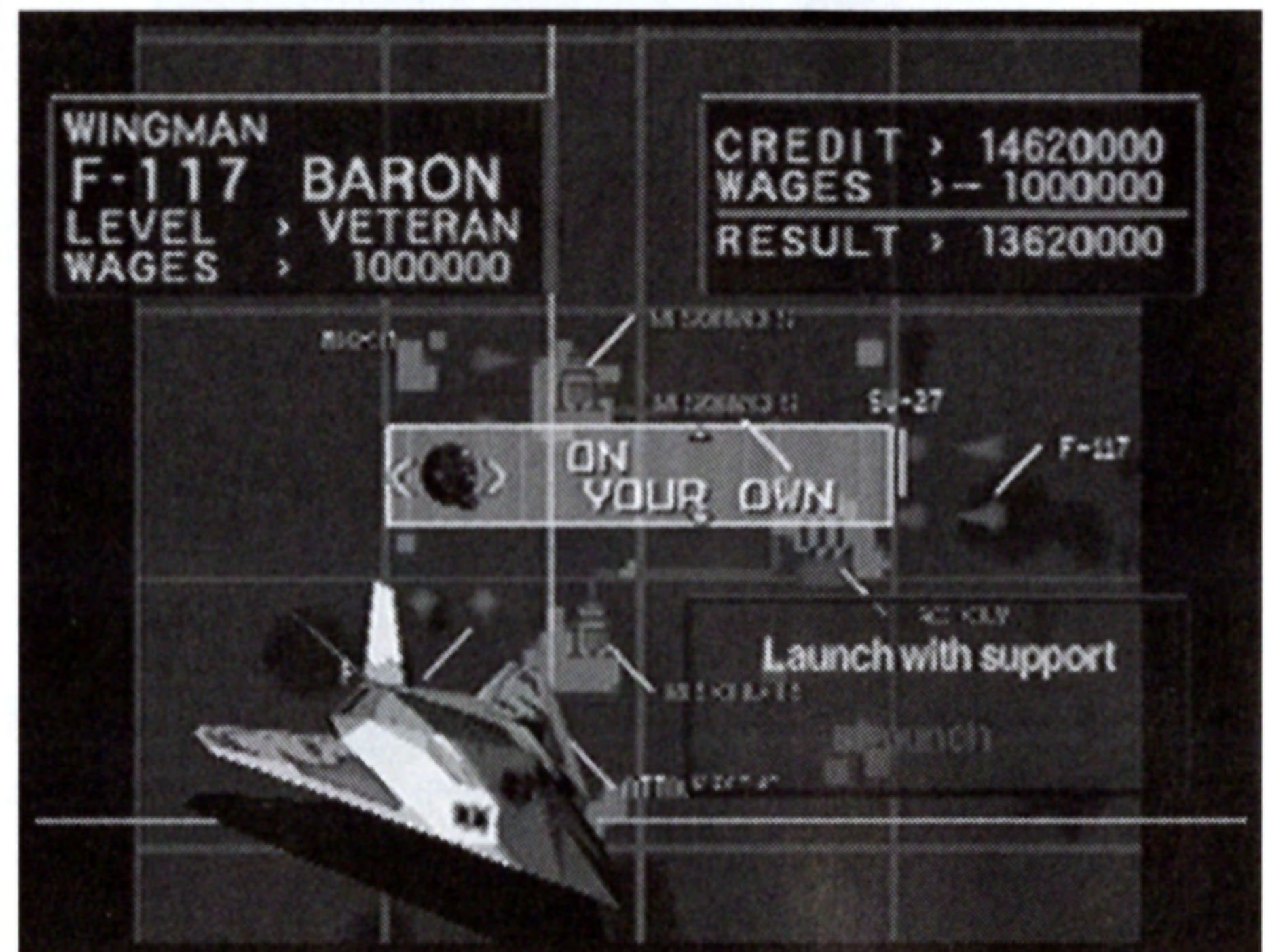
Here you will be given a detailed explanation of the mission which you have chosen from the map. On missions where you are allowed to be accompanied by a wingman, you may choose whether to attack alone or with your comrade. You can access information about the enemy by moving the cursor to the right or the left with the Directional Key.





### 3. Choice of Wingman

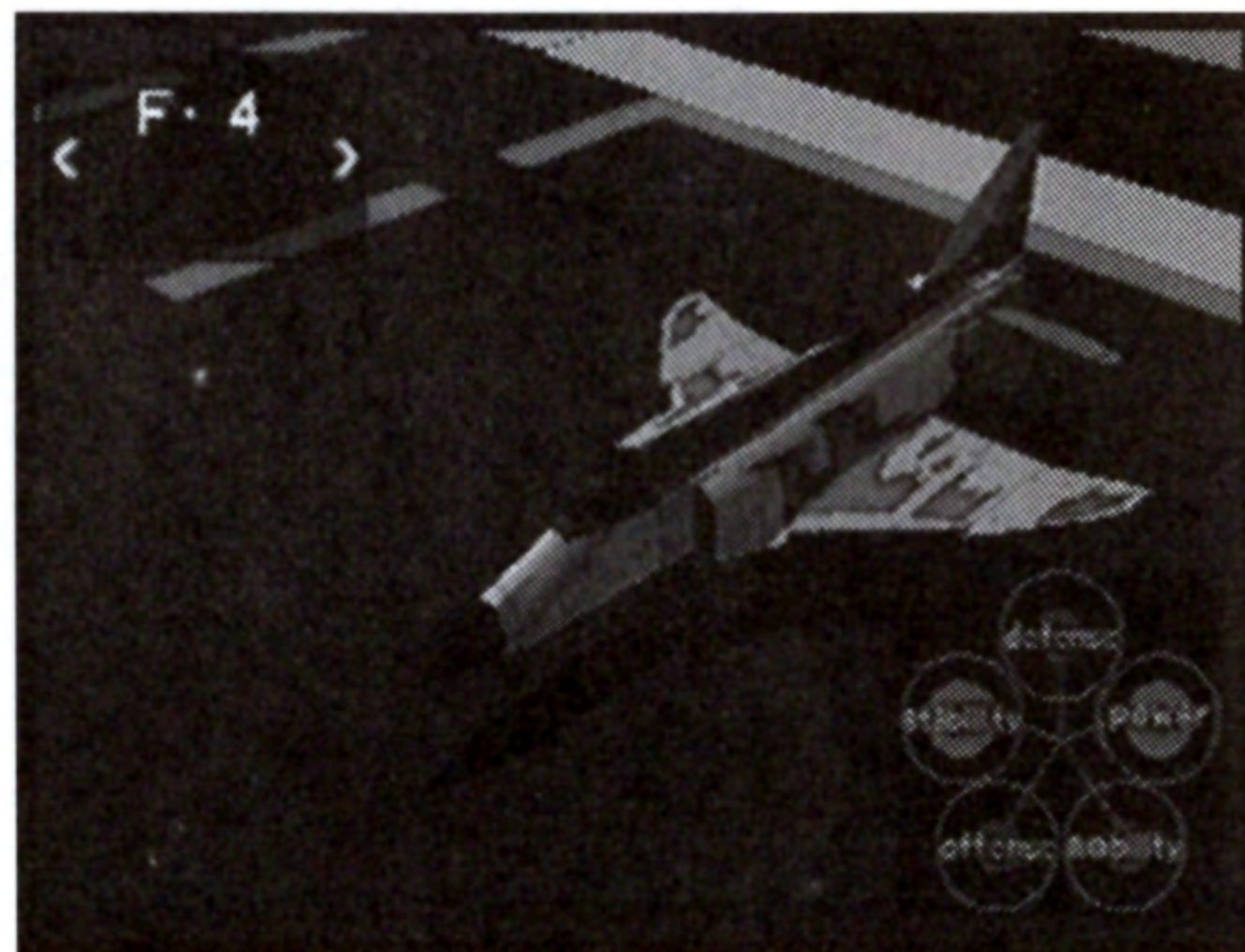
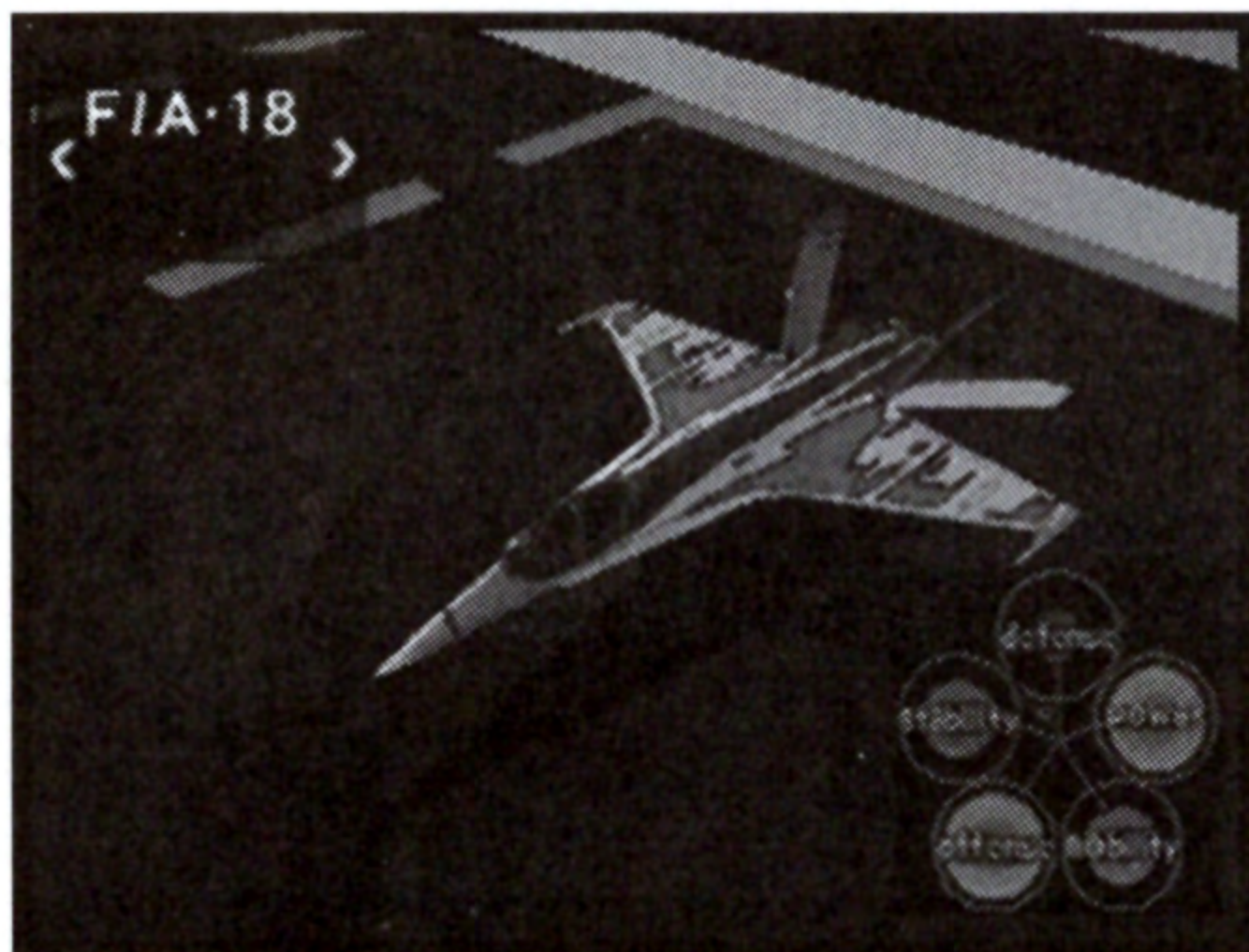
When a wingman is allowed, you may take along only one companion per battle. In order to take someone along with you, you must pay a fee. The higher the fee, the higher the competence and skill of the pilot. Choose a wingman using the Left/Right Directional Key, and designate battle movements with the Up/Down Key.





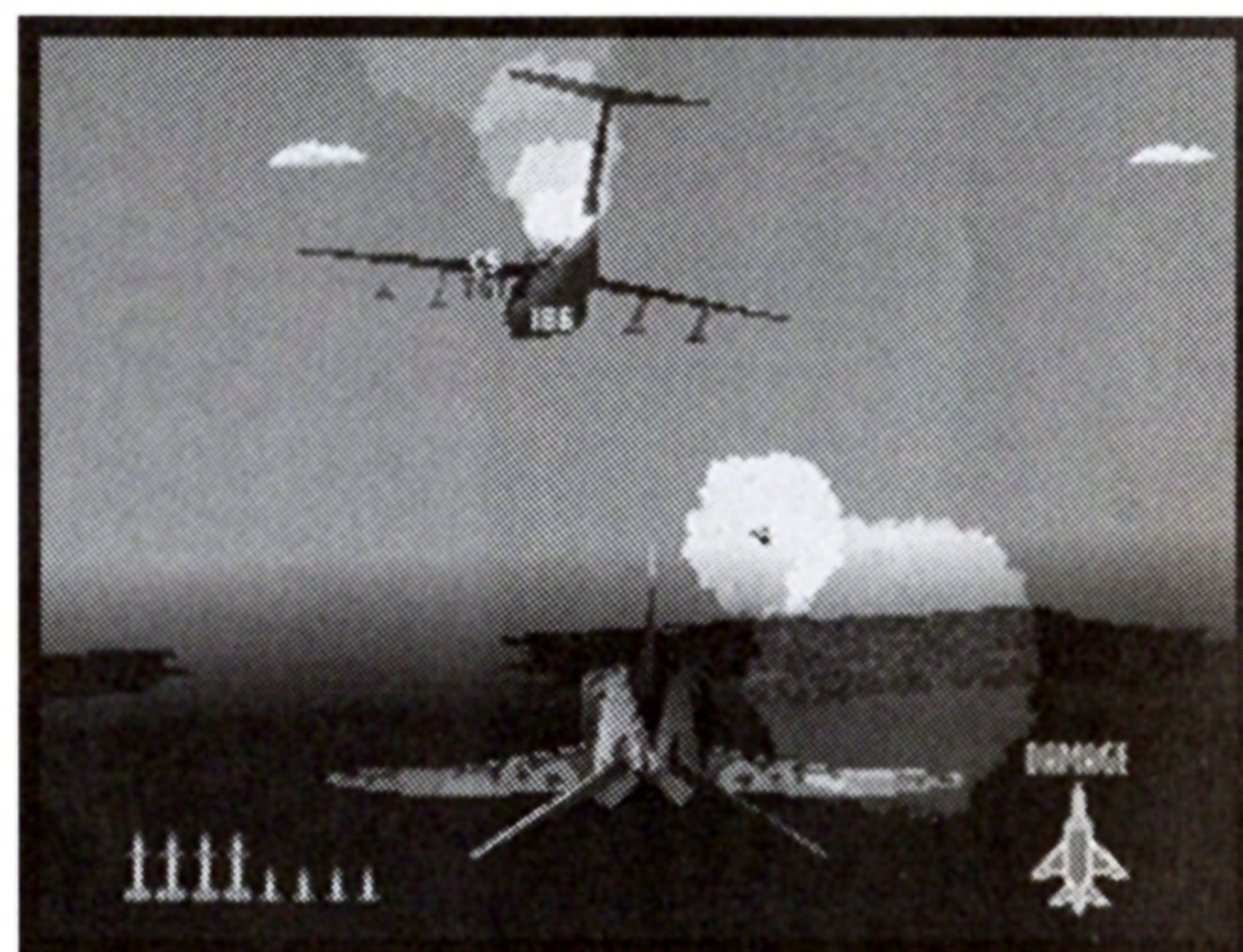
## 4. Choice of Aircraft

You can choose the type of aircraft you will use in combat by using the Left/Right Directional Key. Initially, your choice of planes is limited. As you complete missions more planes become available. You can own up to eight planes.



## 5. Combat Start

Various combat orders are to be carried out, such as total destruction of enemy forces or destruction of specific targets, and your goal is to successfully complete your mission. If your plane is downed or runs out of fuel, this is considered mission failure, and the screen will return to the main map. If you have no planes left at this point, the game will end.





## 6. Mission Accomplished

Immediately after accomplishing your mission a message will appear on screen listing compensation. After this list has appeared, the screen will return to the main map.

## 7. Purchase of Aircraft

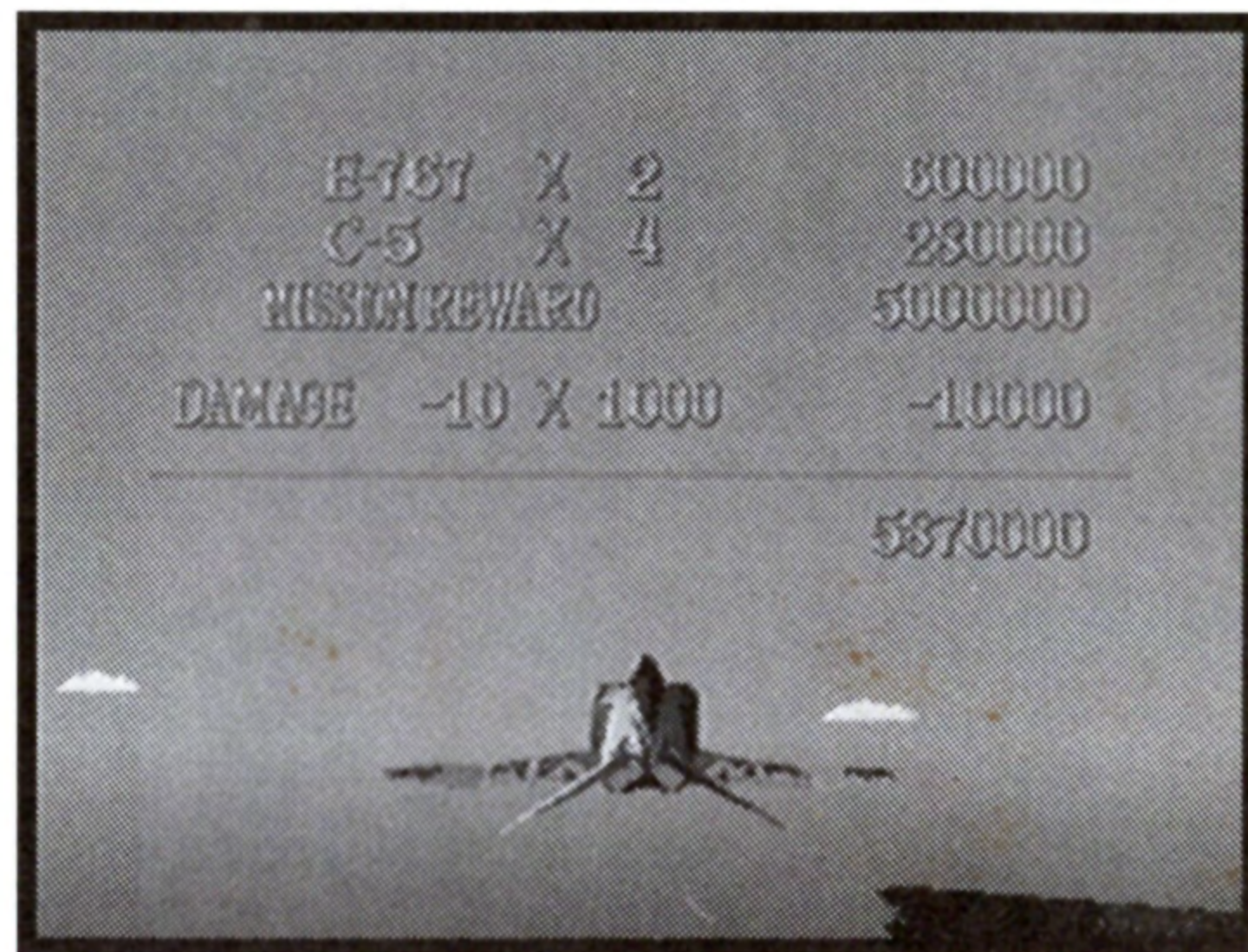
Use the Up-Down Directional Key to highlight VIEW aircraft. Use the circle key or start button to go to the purchase screen.

## 8. Load, Save, Title,

The SAVE, LOAD, and Title menu may be viewed using the Select Button. Choices may be made in all cases using the [ O ] or start Button.

## About Stealth Aircraft

Stealth aircraft are fighter planes and bombers constructed of materials which are difficult to detect by radar. These aircraft are not detectable by radar unless approached quite closely, and therefore have great strength in combat. Stealth fighters such as the F-117, F-22 and the YF-23 appear in this game, along with stealth bombers such as the B-2. Remember to be especially careful in cases where the enemy is in possession of one of these aircraft.





## 2P VS MODE

Your game will start after making choices from the following four subject areas: 1. Type of Aircraft, 2. Handicap, 3. Start, 4. Combat Start.

No Advantage

Players start game by facing each other.

Advantage P2

Game starts with Player 2 behind Player 1.

Advantage P1

Game starts with Player 1 behind Player 2.

Random Advantage

Game begins in one of the three previous positions.

Handicap

Great numbers of stars allows the player to survive more damage.

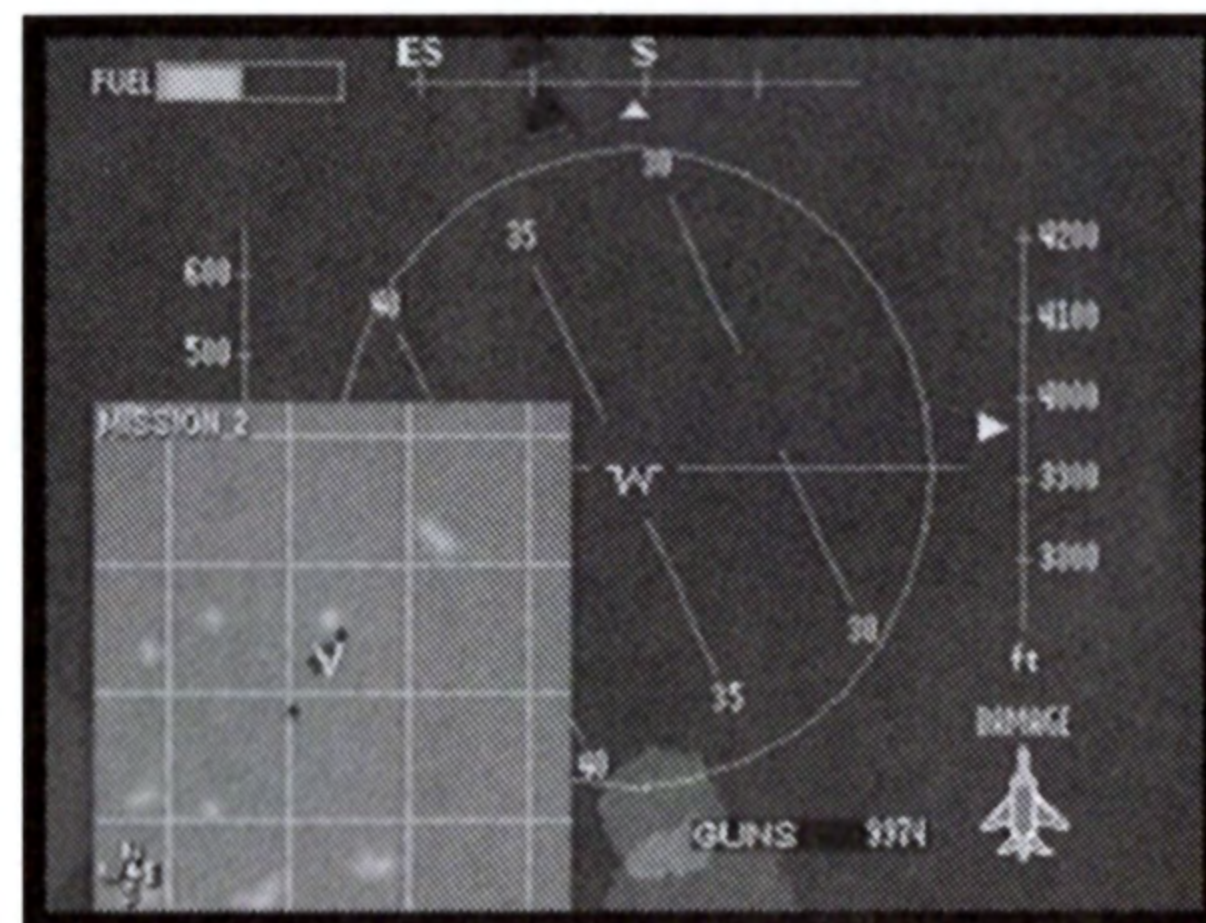
## Map

About one quarter of the total region covered by your mission is shown on screen at any one time. The map scrolls as your aircraft moves along. When the enemy target falls outside of the area covered by the map, a red arrow will appear on screen indicating the direction of the enemy target. Location of enemy targets not detectable by radar can be confirmed with the use of this map.

## HOW TO PLAY

### How to Shoot Down an Enemy Aircraft

In order to shoot down an enemy aircraft, the missile homing radar must lock onto the enemy aircraft. The radar will automatically attempt lock on if the enemy





is within your forward circle and range is less than 1,000. When lock-on has been achieved, you will hear a tone and the tracking circle will be red.

## HOW TO AVOID AN ENEMY ATTACK

If the enemy comes from behind you and locks onto your plane a WARNING message will appear in yellow letters in the center of your screen. If a missile has already been fired, the message CAUTION will appear, and the screen will turn red.

### Standard Evasion Technique

Do not shake the aircraft back and forth needlessly! When evading an attack, move either to the right or the left and continue in the same direction. If you return in the original direction after having evaded an attack, you still have a chance of being hit by the missile. Trust the speed of your own hands on the controls and your aircraft, and keep on rolling. Through experience, you will learn more advanced techniques.

## SAVING AND LOADING

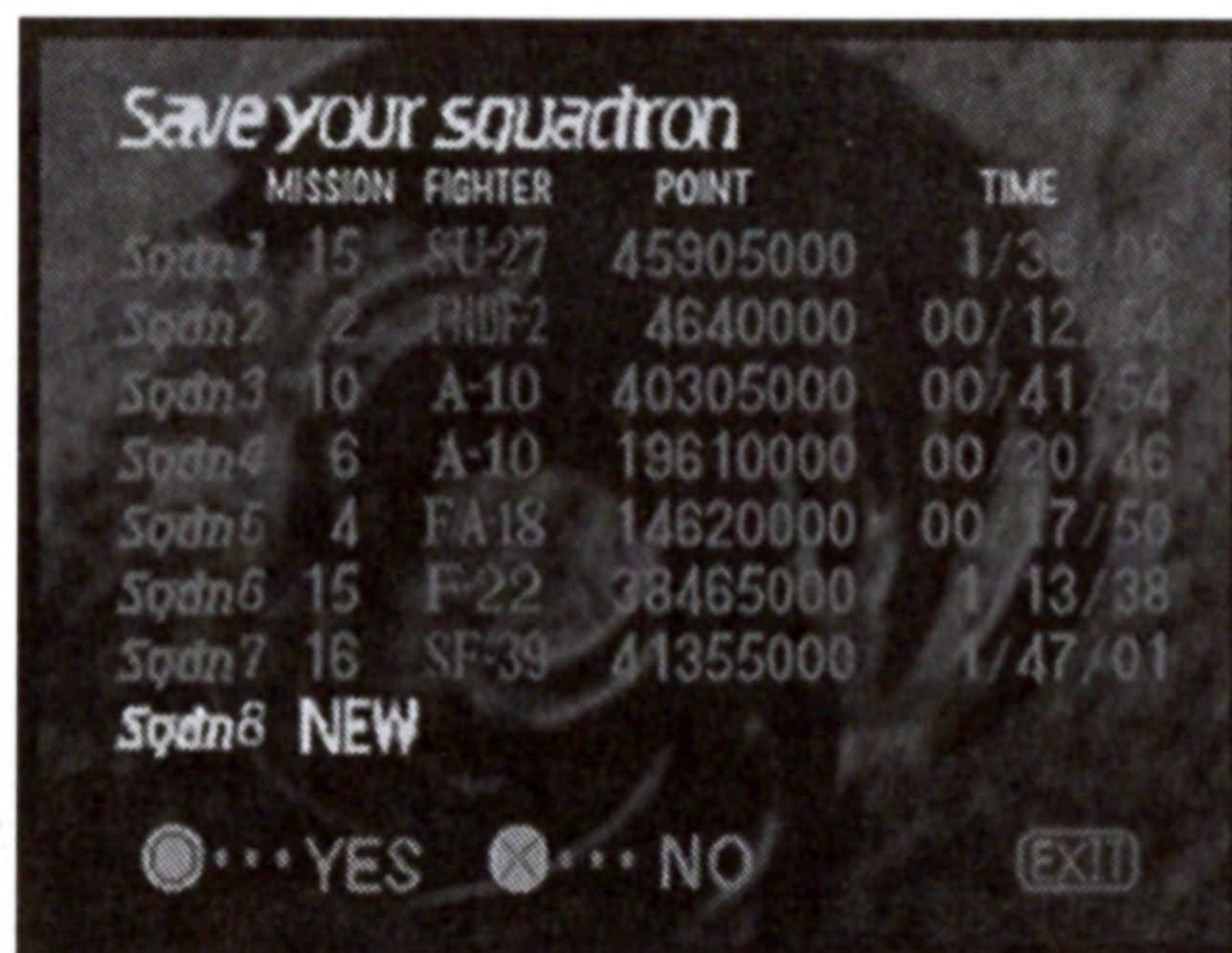
Saving or loading of data are options which may be chosen from the Main Title Screen Menu. Saving or loading is also possible at the Main Map Screen. Saving or loading can be chosen with the use of the Directional Key, and pushing the [ ○ ] Button. The screen will change and show the appropriate icons.





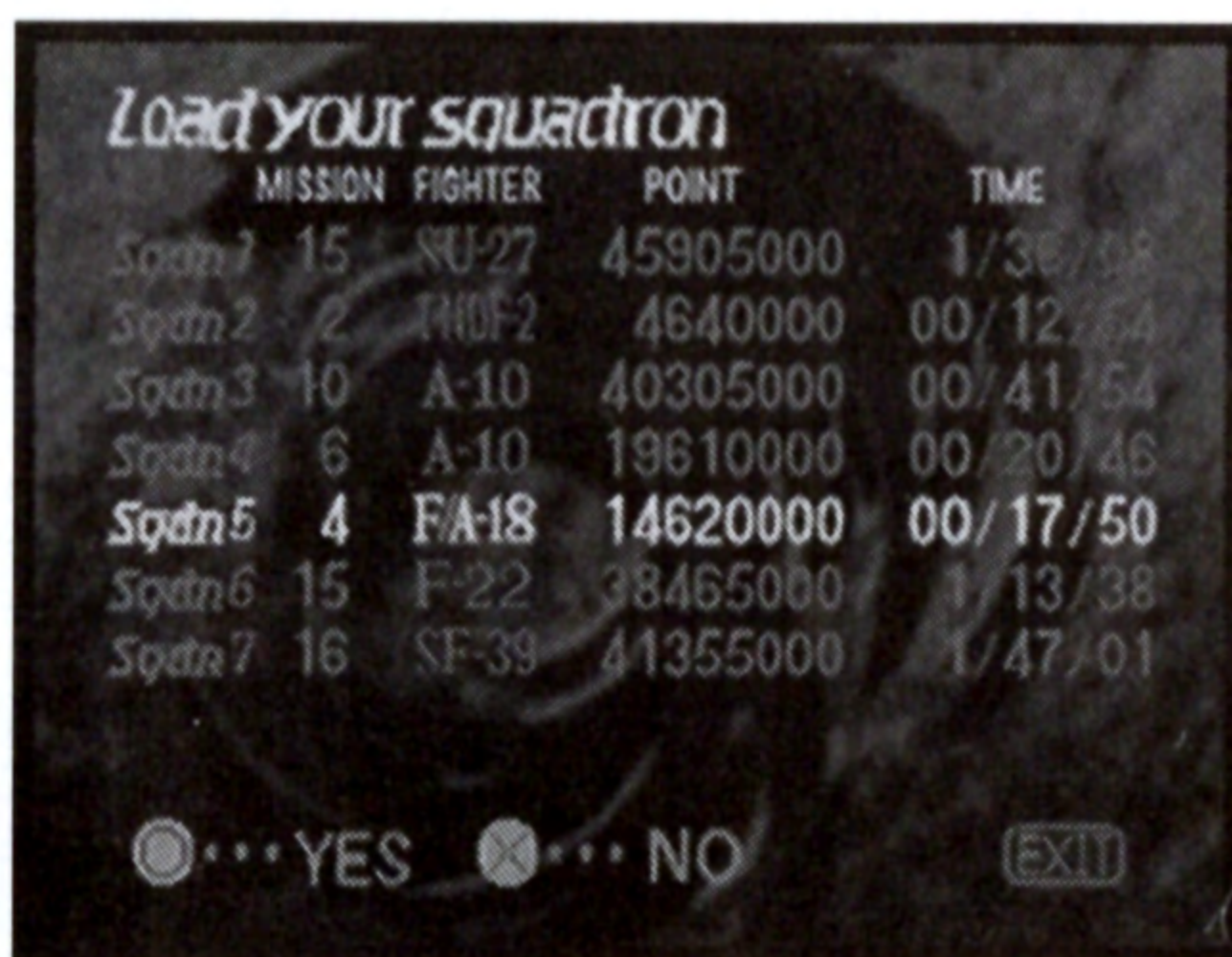
## SAVE Screen

When saving in a new location, first choose NEW with the Up/Down Directional Key, and press Save with the [ ○ ] Button. Data can be written in over the chosen location. The memory card allows for saving in a maximum of 8 locations.



## LOAD Screen

First, choose the data to be loaded using the Up/Down Directional Key, and pressing the [ ○ ] Button. Then, by choosing 1P GAME CONTINUE from the Title Screen menu, the data will automatically be read in.



\*Saving and loading requires a memory card which is sold separately.



## COMMONLY ASKED QUESTIONS

**Q: What's the difference between the novice, and expert controls on the controller configuration screen?**

A: The novice controls only let you turn the plane up to a point. The expert controls let you roll the plane left or right, so you can bank sharply or do complete barrel rolls. You can also yaw left or right by pressing the L2 or R2 buttons. This lets you turn the plane slightly to the left or right, when pressed.

**Q: How do I change from the inside view to the outside view of the plane?**

A: Simply press the select button. NOTE: This only works in the one player game.

**Q: How do I get a new aircraft?**

A: You are given the chance to buy a new aircraft after completing each mission. Go to the view aircraft screen after completing a mission.

**Q: What do the aircraft attributes mean on the view aircraft screen?**

A: POWER: This indicates how fast your plane can accelerate.

MOBILITY: This indicates how well your plane can maneuver or turn in a dogfight.

STABILITY: This indicates how stable your plane is under dogfight conditions.

DEFENSE: This indicates how good your plane's armor is.

OFFENSE: This indicates how good your plane's weaponry is.



**Q: Can I refuel while on a mission?**

A: No, you can't. You must successfully complete the mission with the given amount of fuel.

**Q: What are the on-screen gauges for on the inside plane view?**

A: Top left of screen: This is your fuel.

Top center of screen: This is your compass that shows the direction that you are flying.

Left center of screen: This is your air speed gauge.

Right center of screen: This is your altitude gauge.

Bottom left of screen: This is your close range radar.

Bottom right of screen: This is your plane's damage gauge.

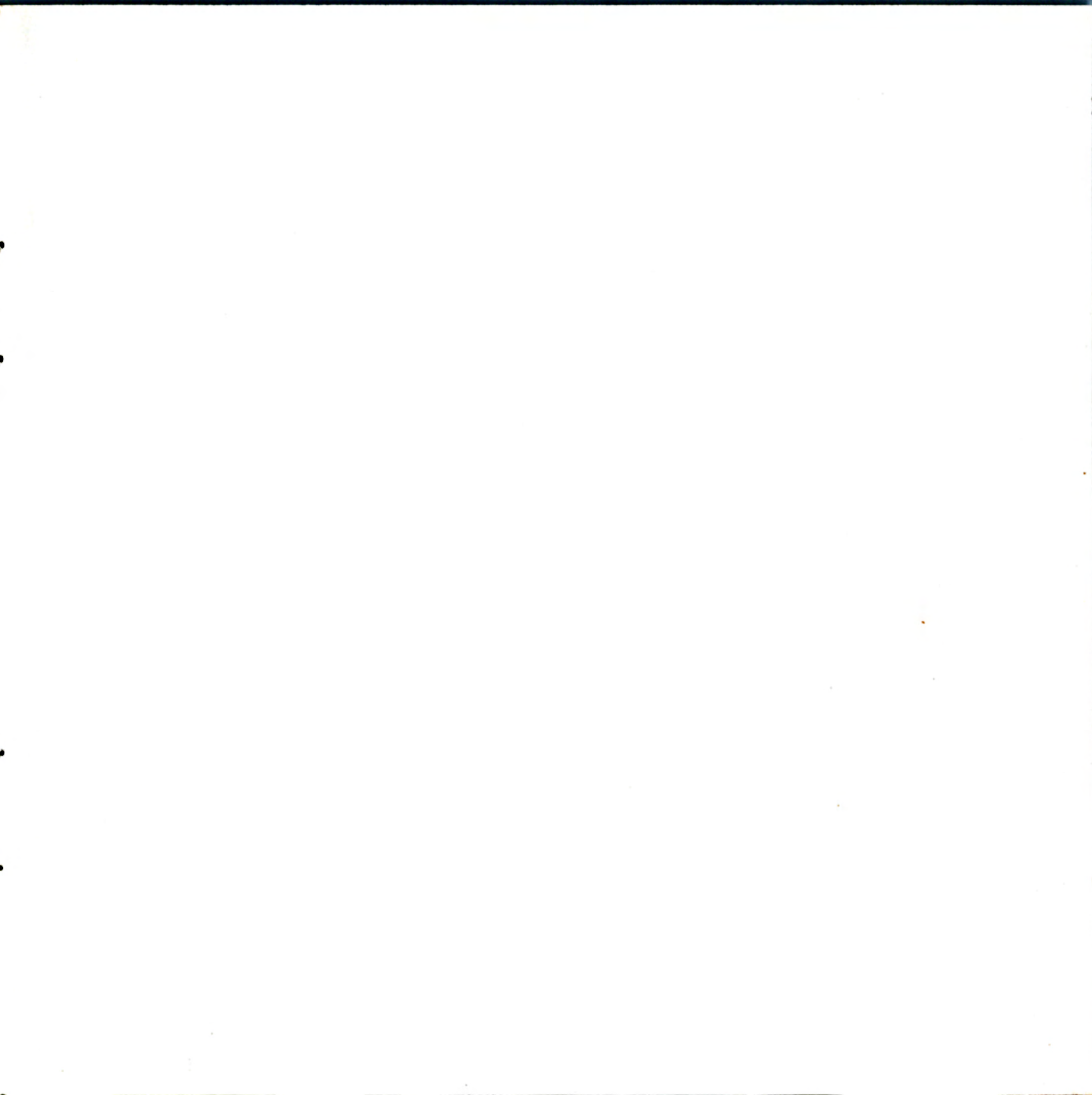
Bottom center of screen: This shows how many missiles and machine gun bullets your plane has left.

Center screen: This shows your H.U.D. display that indicates your pitch and roll of your plane.

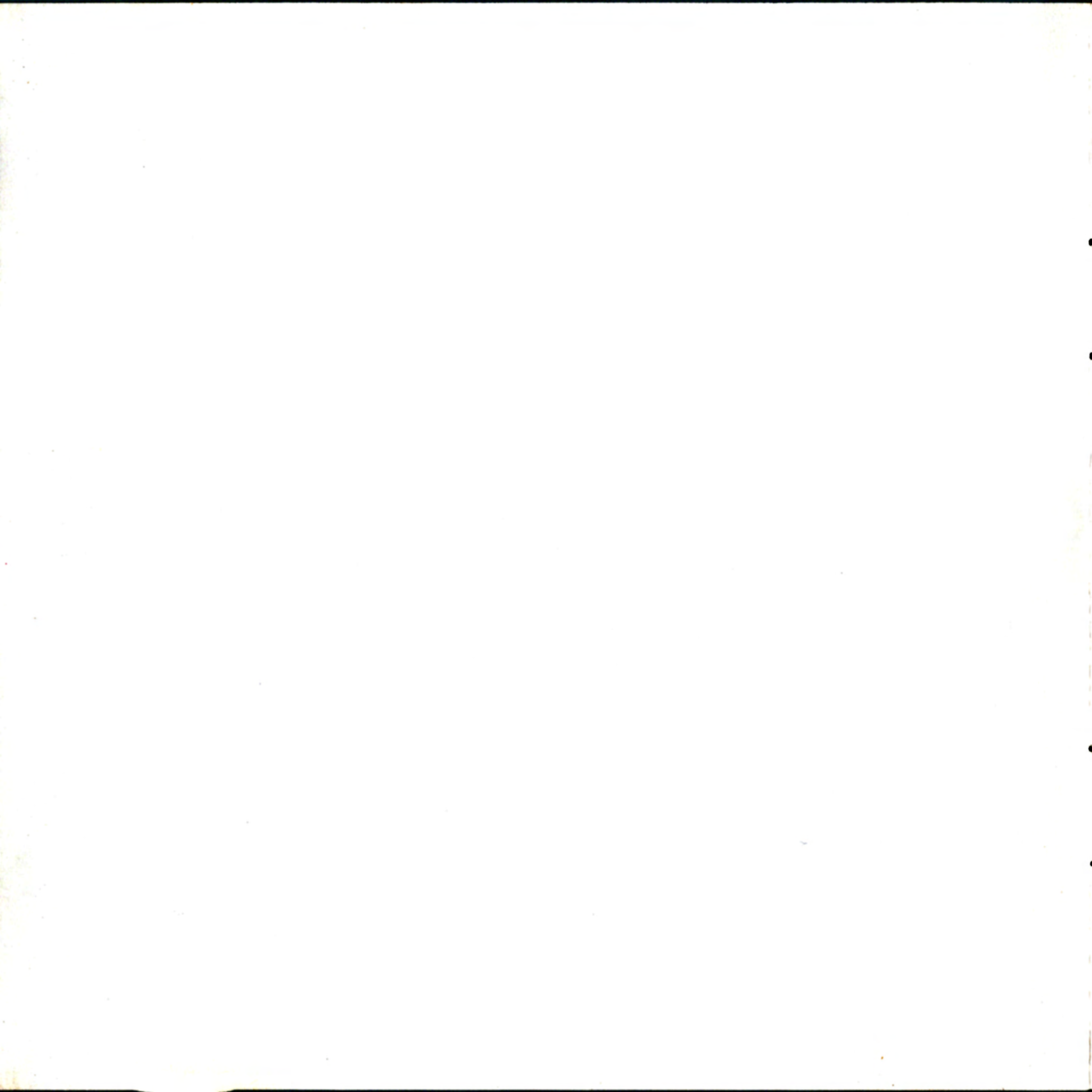
**Q: How do I save my game after completing a mission?**

A: While on the map screen press the select button, then select the save command, and then press button ○. Next, press button ○ to save your game or highlight an old save game file and press button ○ to save your new data over the old data set. To load your saved game data select OPTION from the title screen and press button ○. Next, select the load data icon and press button ○. Now highlight the game file you wish to restore and press button ○. Return to the title screen and select 1P GAME CONTINUE and press start.











## CREDITS

Published by: Namco Hometek Inc.  
Designed and Developed by: Namco Ltd.

### NAMCO HOMETEK TEAM

Chris Bull  
Loan Vu  
Jeff Yonan  
Yuri Saito  
Dave Winstead  
Geoff Erickson

### MANUAL DESIGN

Darien & Kilburg

### SPECIAL THANKS

Craig Erickson

## Hint Line

Hints are available within the U.S. only.  
\$0.95 per minute pre-recorded information  
\$1.15 per minute live representative  
assistance

**1-900-737-2262**

Automated support available 24 hours a day, 7 days a week. Representatives available Monday – Friday, 9 am – 6pm Pacific Coast Time. This hint line supports all PlayStation titles produced by Namco Hometek Inc. Long-distance charges are

included in the above rates. Callers under 18 years of age, please obtain permission from a parent or guardian before calling. You must have a touch-tone phone to use this service.

For questions and information regarding the Hint Line, write to:

Namco Hometek Inc.  
150 Charcot Avenue, Suite A  
San Jose, CA 95131-1102

**Namco Online:** <http://www.namco.com>  
visit our Website to get information about our new titles.

## LIMITED WARRANTY

Namco Hometek Inc. warrants to the original purchaser that this Namco Hometek Inc. game pak shall be free from defects in material and workmanship for a period of ninety (90) days from the date of purchase. If a defect covered by this limited warranty occurs during this 90-day limited warranty period, Namco Hometek Inc. will repair or replace the defective game pak or component part, at its option, free of charge.

This limited warranty does not apply if the defects have been caused by negligence, accident, unreasonable use, modification, tampering, or any other cause not related to defective material or workmanship.

## LIMITATIONS ON WARRANTY

Any applicable implied warranties of merchantability and fitness for a particular purpose, are hereby limited to ninety (90) days from the date of purchase and are subject to the conditions set forth herein. In no event shall Namco Hometek Inc. be liable for consequential or incidental damages resulting from the possession or use of this product.

The provisions of the limited warranty are valid in the United States only. Some states do not allow limitations on how long an implied warranty lasts, or exclusion of consequential or incidental damages, so the above limitation or exclusion may not apply to you. This limited warranty provides you with specific legal rights. You may have other rights which vary from state to state.



# AIR COMBAT™

TM

Namco Hometek Inc. 150 Charcot Avenue, Suite A, San Jose, CA 95134-1102.  
™ & © 1995 Namco Ltd. All rights reserved. Manufactured pursuant to license with Namco-America Inc.  
U.S. and foreign patents pending.



Licensed by Sony Computer Entertainment America for use with the PlayStation game console. PlayStation and the PlayStation Logos are trademarks of Sony Computer Entertainment. The ratings icon is a trademark of the Interactive Digital Software Association. Manufactured and printed in the U.S.A. THIS SOFTWARE IS COMPATIBLE WITH PLAYSTATION GAME CONSOLES WITH THE NTSC U/C DESIGNATION. US AND FOREIGN PATENTS PENDING.

**namco**